

Hospital: a key element for innovation and progress



Advancing Global
Health & Health Care



CORPORACIÓ SANITÀRIA
PARC TAULÍ

Dr. Lluís Blanch Torra
Senior Critical Care
Director of Research and Innovation
Director de l'Institut d'Investigació i
Innovació Parc Taulí **I3PT**

2015 IHFCHICAGO
39th World Hospital Congress

Research and innovation at Parc Taulí: what for?

- **For patients:** increasing knowledge to improve care and prognosis of diseases.
- **For professionals:** motivation and satisfaction. Expanding knowledge and economic return.
- **For the institution:** prestige, recruitment (talent attraction), social role, economic engine and tangible return.
- **For society:** helping patients creating products and services that improve their lives.

The strategic objectives in 2015 are:

The strategic objectives will focus on the fulfillment of specific goals in two areas: research and innovation

Excellence in research

The CSPT will maintain the research activity in the areas in which we are scientifically excellent, but without losing sight of that which is transferable to the market.

The investigation will be adjusted to criteria of quality, sustainability and excellence

Model of sustainable innovation

Transferable to market products must contribute to sustaining the innovation model

... through its value and commercialization, capturing business, globally

... by internal application, in health activity at CSPT

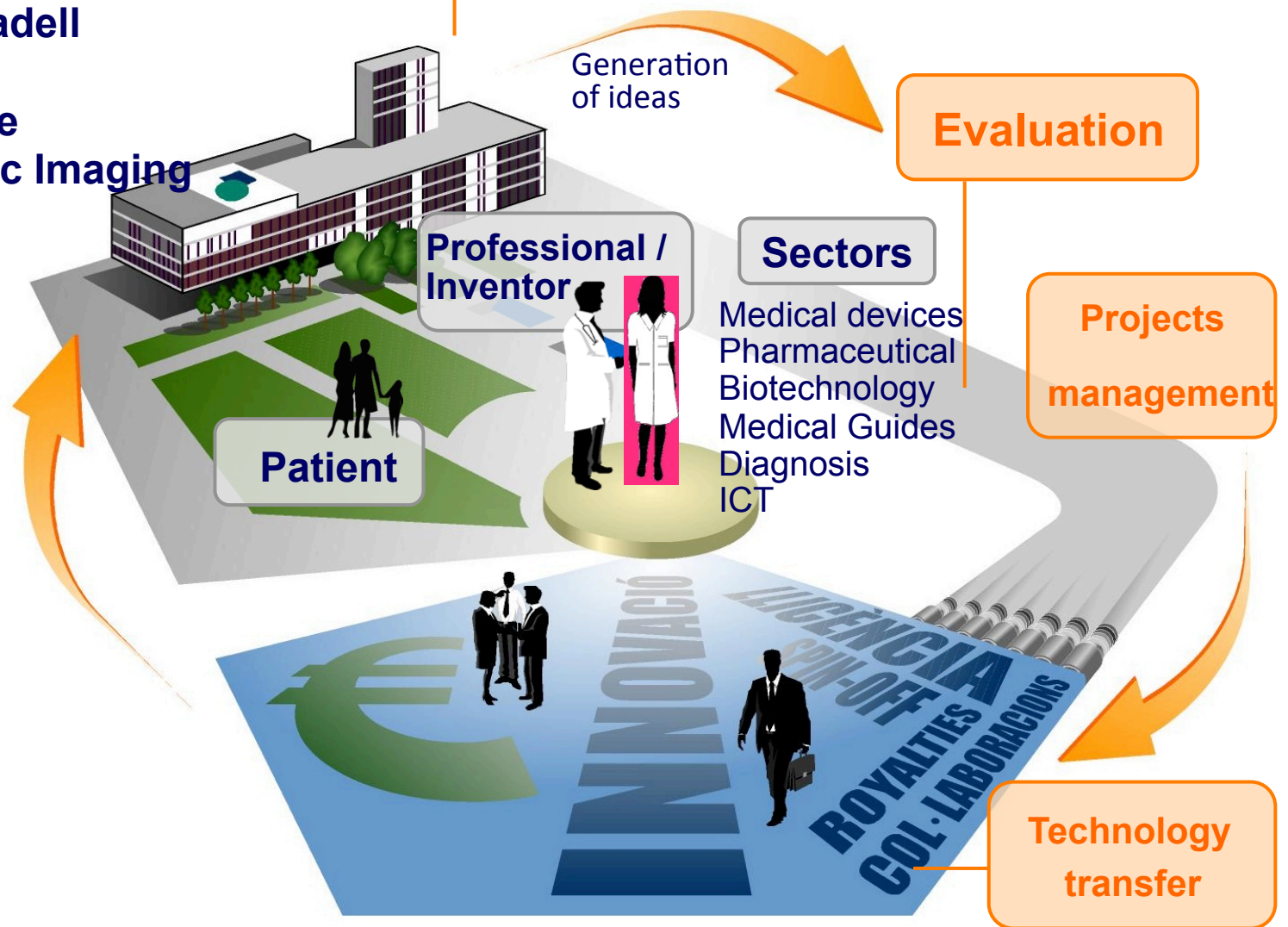
By establishing common strategic objectives adapted to each one of the two areas

Model of innovation Parc Taulí

Centers

Hospital de Sabadell
 Elderly Care
 Dependence care
 UDIAT-Diagnostic Imaging
 Primary Care
 Mental Health

Promotion of Innovative culture



Regulatory Framework

Rights and obligations of the CSUPT researchers working in innovative projects

Objectives:

- Promoting culture and research activities among researchers at the Parc Taulí to stimulate the generation of innovations within the institution.
- Establishing a flexible technology transfer policy.
- Developing means of transferring knowledge to society, in pursuit of sustainability of the model by obtaining appropriate socio-economic returns.

**Approved by hospital' board of directors
on 2nd of July, 2008**

Our Team



We are a multidisciplinary team:

- Physician
- Biochemist
- Sociologist
- Industrial engineers
- Designer

and we are passionate about innovation; constantly in training and working towards the excellence of our unit.

SMEs

Hospitals

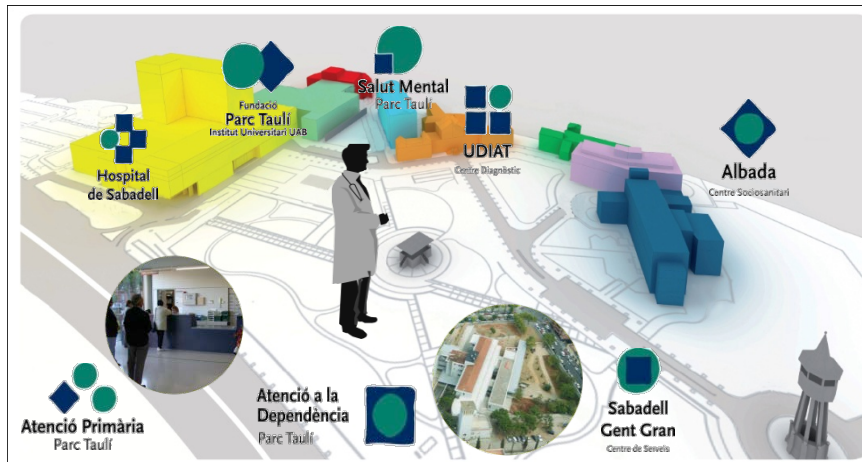
Technology centers


Government bodies

Universities



Exploitation of knowledge for the benefit of the patient, the institution and the professional



Research Office + 
UNITAT D'INNOVACIÓ
PARC TAULÍ

Mission

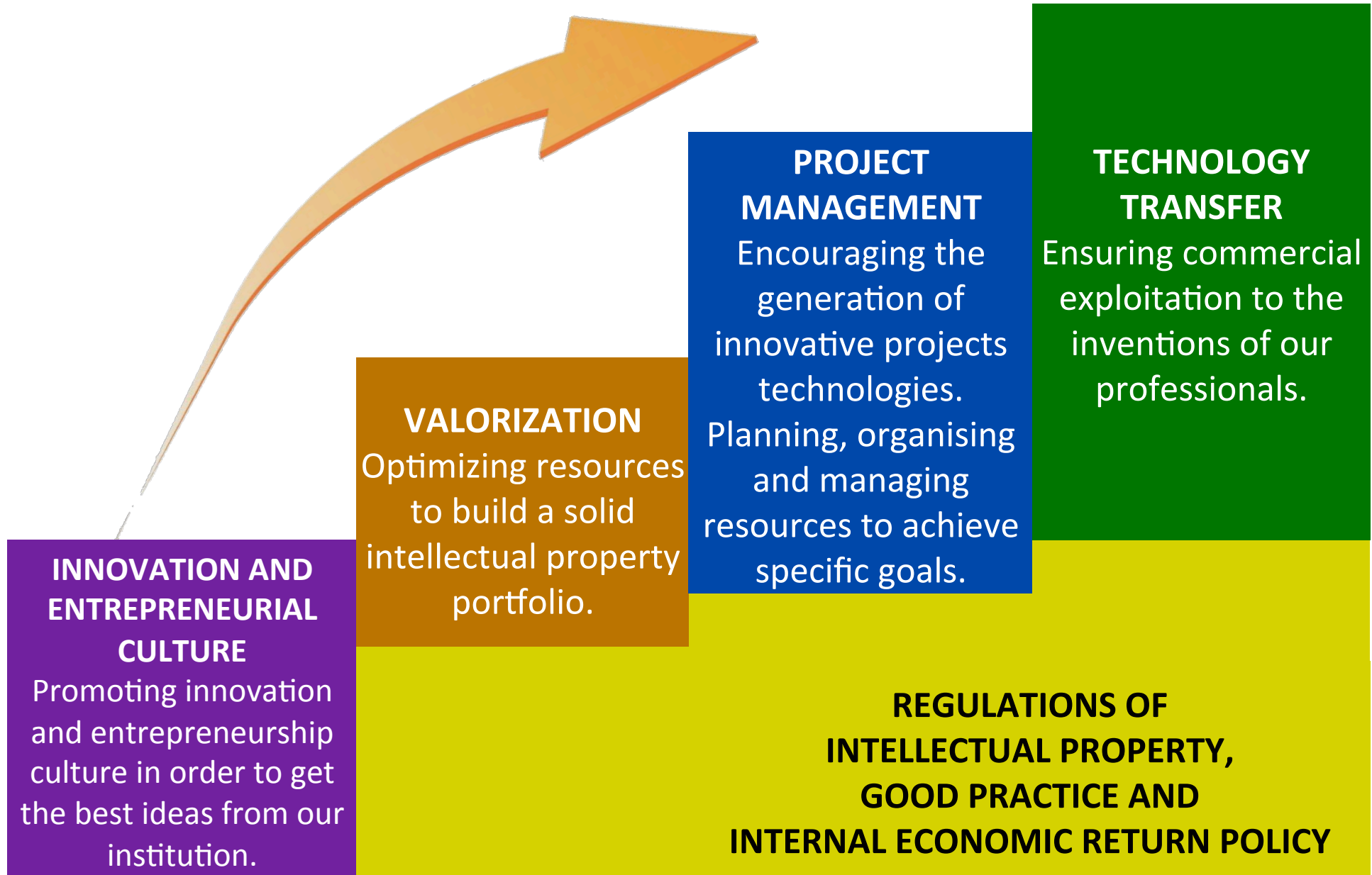
Protection

Exploitation

Acknowledge

HEALTH BENEFITS & REVENUES

Innovation Model





Citation Index 1985-2014



Parc Taulí Sabadell
Hospital Universitari



Universitat Autònoma
de Barcelona



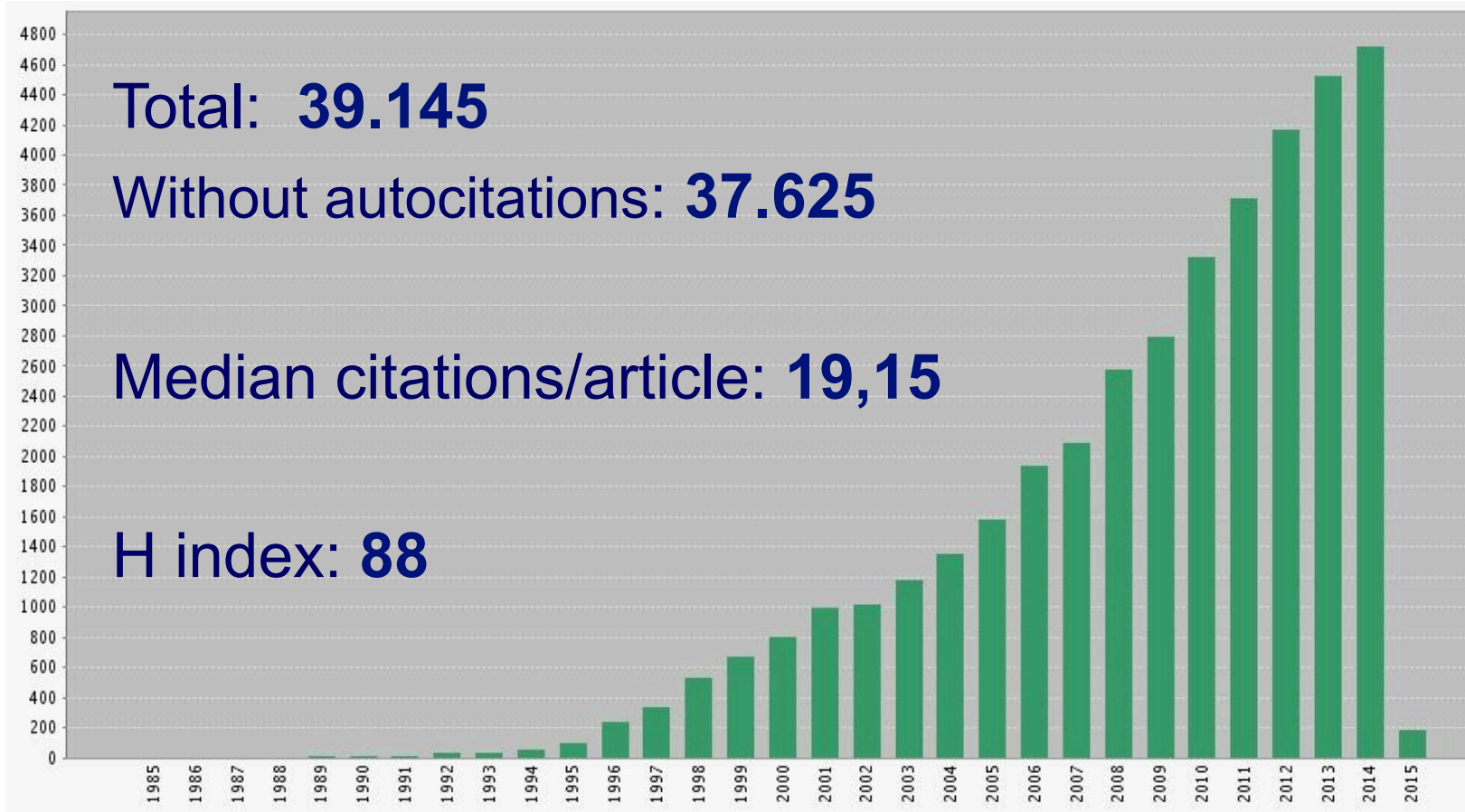
Parc Taulí Sabadell
Hospital Universitari
UDIAT



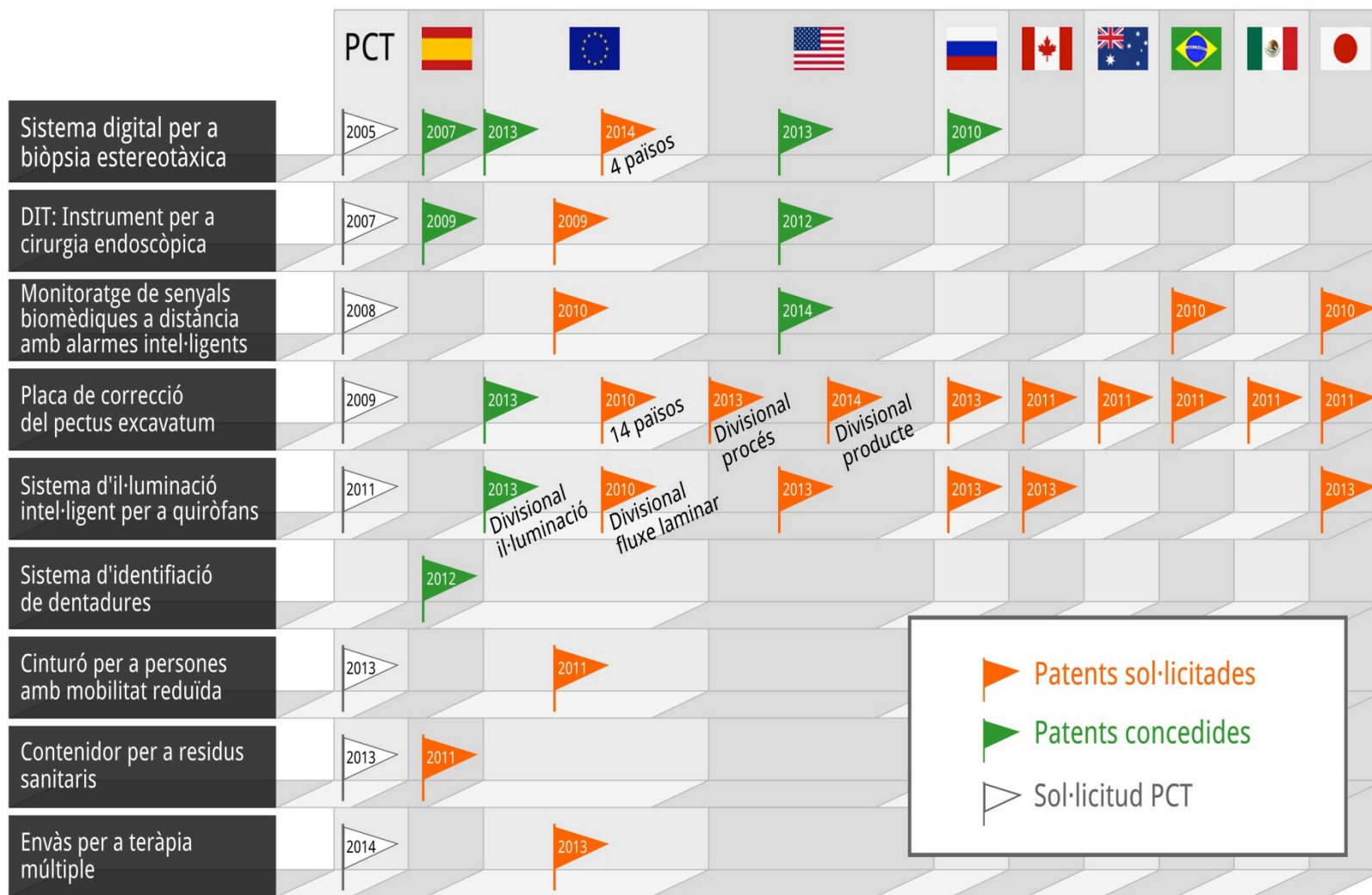
Parc Taulí Sabadell
Hospital Universitari
Fundació Parc Taulí



Parc Taulí Sabadell
Hospital Universitari
Sabadell Gent Gran



Patents Portfolio



Intellectual Property



RAIM
RAIM SERVER



Protección mediante: Registro de Marca, Registro de Programario, Derechos de autor, explotación licenciada ...

Promoting the innovation culture

Training and creativity sessions



Briefings

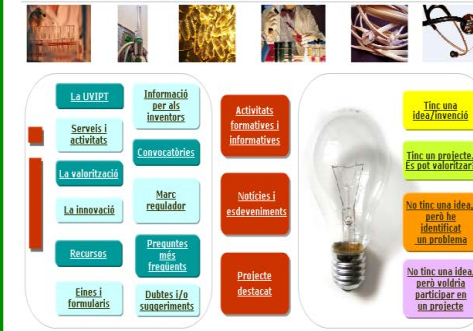


Calls for Innovation grants and awards for innovation in improving processes



We work to raise awareness of our professionals the importance of innovation from the institution and help them to find appropriate mechanisms to exploit their knowledge

Unitat de Valorització i Innovació Parc Taulí (UVIPI)



Agenda of external courses, sessions and meetings

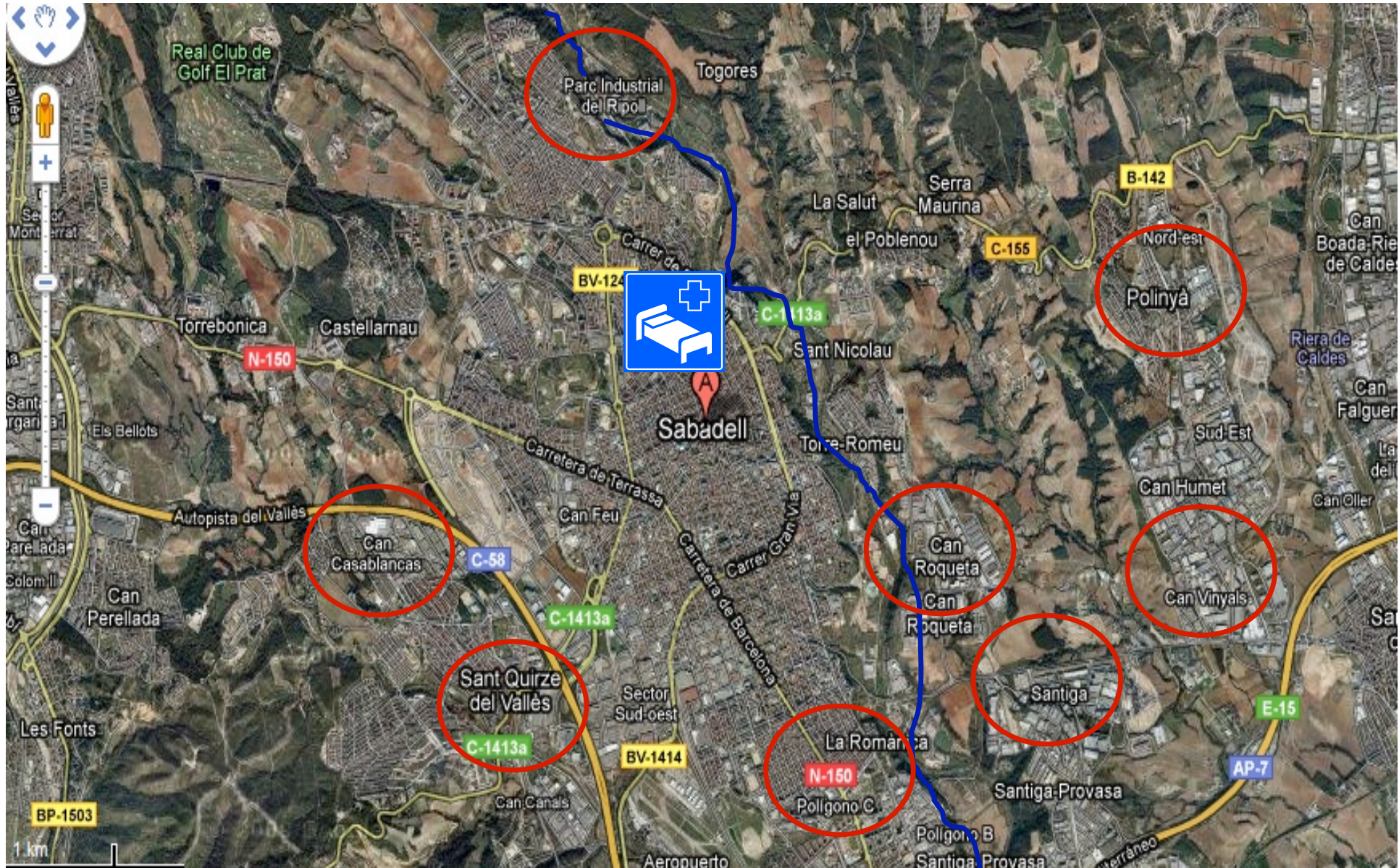


Presentation of technologies and meetings with companies



Satellites Meetings

Hospitals + Companies + Administrations + Universities





lblanch@tauli.cat

Thank you !!