

# WORLD HOSPITAL CONGRESS STUDY TOUR TO NSW HEALTH

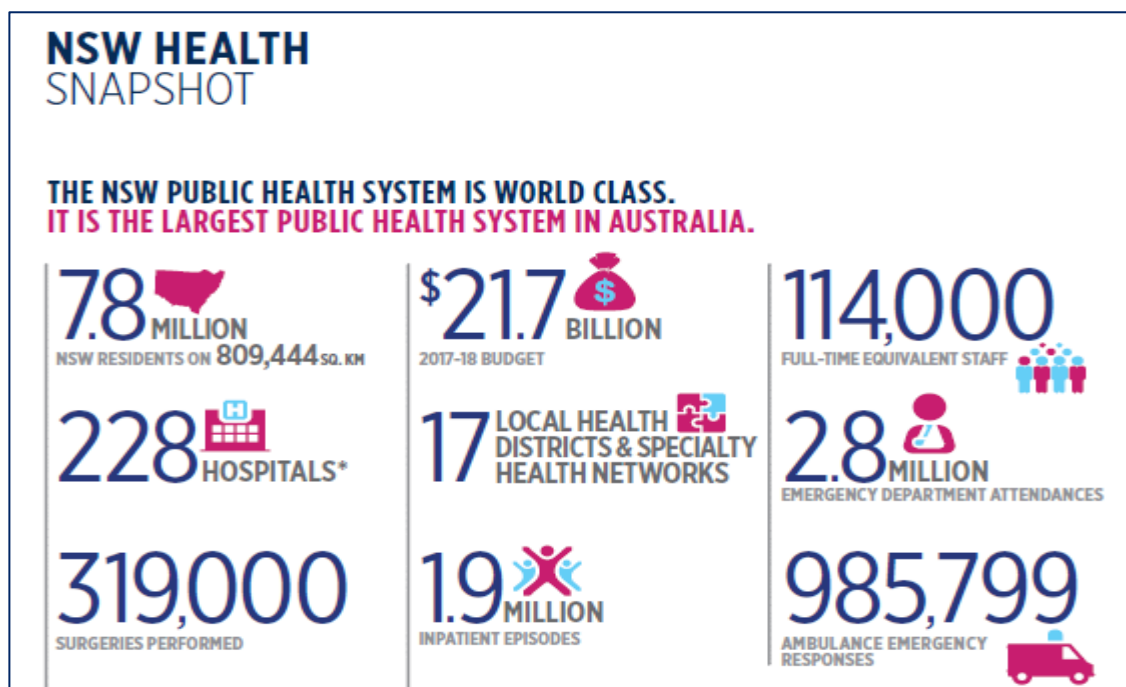
Monday 15 and Tuesday 16 October 2018

Australia has a system of health care that is recognised as being one of the most effective in the world. The New South Wales (NSW) public health system is a critical part of this achievement.

NSW is home to one third of the Australian population. NSW Health is the largest health care system in Australia, and one of the largest in the world with 228 public hospitals providing services and employing around 114,000 staff.

With an ageing population and a growing number of people living with chronic or complex health conditions, people's health needs are changing and demands on the health system are increasing. NSW Health is responding to these challenges by investing in new, innovative models of integrated care, transforming the health system to routinely deliver person-centered, seamless, efficient and effective care, particularly for people with complex, long term conditions.

We welcome you to come and experience the exciting, innovative and world-class healthcare available in New South Wales, Australia.



### Estimated costs: maximum AUD\$750\* including:

- Transport from the preferred hotel to all activities outlined in the Planned Program on 15 & 16 October
  - Catered morning tea, lunch and afternoon tea on 15 and 16 October.
  - Dinner on Monday 15 October in the Circular Quay precinct (excluding drinks which can be purchased on consumption)
  - Drop off to Sydney Airport or hotel on 16 October at conclusion of the program
- \* final price will be dependent on attendee numbers.*

### Excluded costs:

- Flights from Brisbane to Sydney
- Hotel Accommodation. Reservations to be made directly with the hotel – details to follow. The preferred hotel will be the pick-up and drop-off point throughout the Study Tour.

## Planned Program

### DAY ONE – MONDAY, 15 OCTOBER 2018

#### Overview of the NSW Health System and Priorities

NSW Health consists of the Ministry of Health, Local Health Districts and state-wide and specialist health service organisations working together to deliver a world-class health system for the people of NSW.

The session will address the functions and operations of the NSW Health system, share current and emerging challenges and highlight key pieces of work underway to improve patient outcomes and experiences and support healthier communities.

---

#### The Cancer Institute NSW Lecture: Reporting Better Cancer Outcomes (RBCO)

The Cancer Institute NSW is the Cancer Central Agency for NSW and is a pillar organisation of NSW Health, providing the strategic direction for cancer control in NSW.

The Cancer Institute NSW collect and use the latest cancer data, information and evidence to drive improvements in cancer outcomes. They are the largest funder of cancer research in the state, with a focus on the translation of research findings into clinical practice. They are also responsible for the program management for the national screening programs in NSW and also manage a prevention program.

---

#### Sydney Children's Hospitals Network Tour

The Sydney Children's Hospitals Network is the largest network of hospital and services for children in Australia. The tour will take place at The Children's Hospital at Westmead.

The tour will include the wards and Kids Research, including the EPIC 3D (Engineering and Prototyping of Implants for Children) and the recently opened Clinical Research Centre.

EPIC 3D design and printing is being used develop to novel implants for children with lower limb deformities. The Centre for Bone and Musculoskeletal Health, led by Prof David Little, is a world leader in medical device innovation for children with limb deformities. The revolutionary new implants address clinical gaps in paediatric bone health. They are tailored for a child's specific orthopaedic needs and will result in less time in hospital, shorter healing times and most importantly, better functioning for children. Young patients can have early access to new and innovative treatments.

The Clinical Research Centre was constructed as part of the Westmead Redevelopment project and is a first of its kind in NSW. It provides a purpose-designed paediatric clinical trial and research facility, providing investigators and industry sponsors with support for all types of clinical research. This research ranges from trials of novel therapeutic agents to large public health prevention trials and it is expected that 1,000 children will be involved in clinical trials annually.

---

#### Tour of the Westmead precinct: the biggest health infrastructure project in the state

The Westmead precinct is one of the largest health, education, research and training precincts in Australia and a key provider of jobs for the greater Parramatta and western Sydney region. More than \$3 billion has been committed by government, universities and the private sector to upgrade and expand the precinct's health services, education and medical research facilities over the coming years.

Spanning 75 hectares, the Westmead precinct comprises over 400,000m<sup>2</sup> of high-end health-related developments, including four major hospitals, three world-leading medical research institutes, two university campuses and the largest research intensive pathology service in NSW.

## DAY TWO – TUESDAY, 16 OCTOBER 2018

### Site visit and tour of NSW Health State-wide Biobank

The NSW Government has invested \$12 million in the NSW Health State-wide Biobank to support world-class health and medical research across the state.

This state-of-the-art facility will help revolutionise NSW research efforts into cancer, diabetes, heart disease and rare genetic conditions. Enabling access to the largest collections of human samples in Australia — DNA, blood, tissue and tumour cells — it will help NSW researchers improve the way disease is detected, diagnosed and treated.

---

### Sydney Local Health District Lecture: Augmented Reality to Virtual Reality: From patient care to surgical simulation

Sydney Local Health District looks after all public hospitals and healthcare facilities in the central Sydney metropolitan area from Balmain to Canterbury.

Augmented reality, Virtual Surgical Planning (VSP), 3D-printing and bioprinting are disruptive technologies that are changing the landscape of surgery, particularly within the fields of Otolaryngology, head and neck surgery and facial reconstruction. This presentation will explore the current and future roles of each of these technologies from the perspective of patient education, surgeon training, optimising patient outcomes, and in reducing the side effects of reconstructive surgery.

---

### eHealth NSW hosted Lecture: The digital landscape of health care in NSW.

eHealth is the electronic management of health information to deliver safer, more efficient, and better quality healthcare. NSW has developed one of Australia's most sophisticated and effective eHealth environments, particularly in areas such as electronic patient, medical and medication records, digital imaging and systems connectivity. eHealth NSW supports NSW to realise the vision of a digitally enabled and integrated health system delivering patient-centred health experiences and quality health outcomes.

Hosting more than 550 eHealth applications, the work of eHealth NSW connects and supports Australia's largest public health system and the 140,000 professionals who provide healthcare to the state's 7.5 million-strong population. eHealth NSW guides ehealth strategy and planning, sets policy and standards, and leads state-wide ICT program implementations and operations. Recognising that partnerships are integral to the successful implementation and adoption of eHealth initiatives, a federated governance model has been adopted by eHealth NSW.

---

### Drop off at Sydney Airport or City Hotel

Expressions of interest for this two-day study tour should be sent to [icse@moh.health.nsw.gov.au](mailto:icse@moh.health.nsw.gov.au) by Friday 29 June 2018.

For further information, please contact: [icse@moh.health.nsw.gov.au](mailto:icse@moh.health.nsw.gov.au)